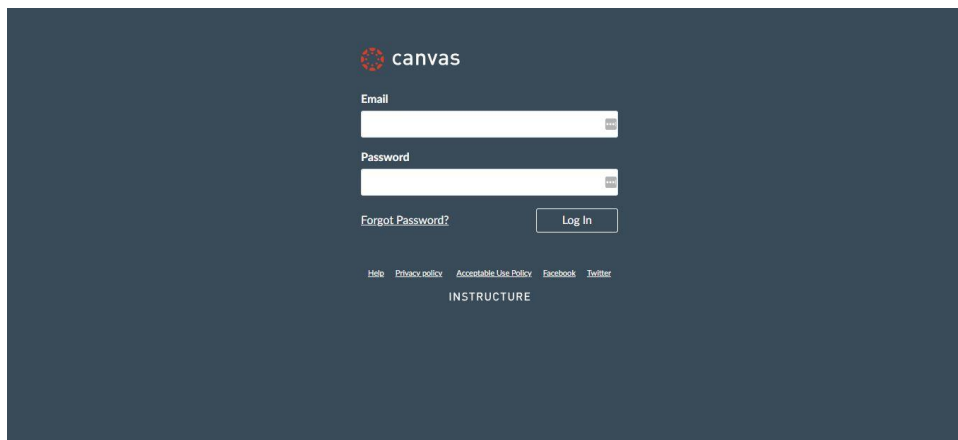
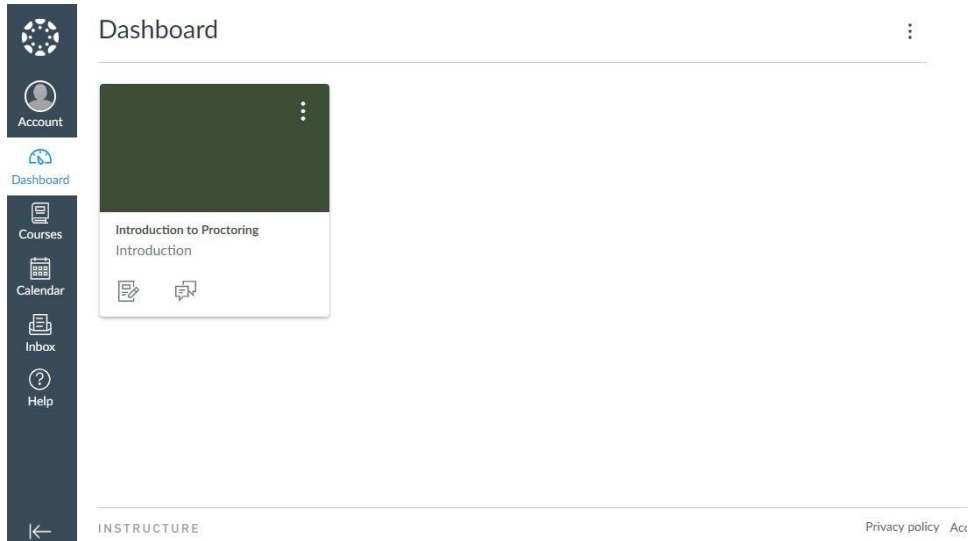


Proctortrack Canvas Installation Guide

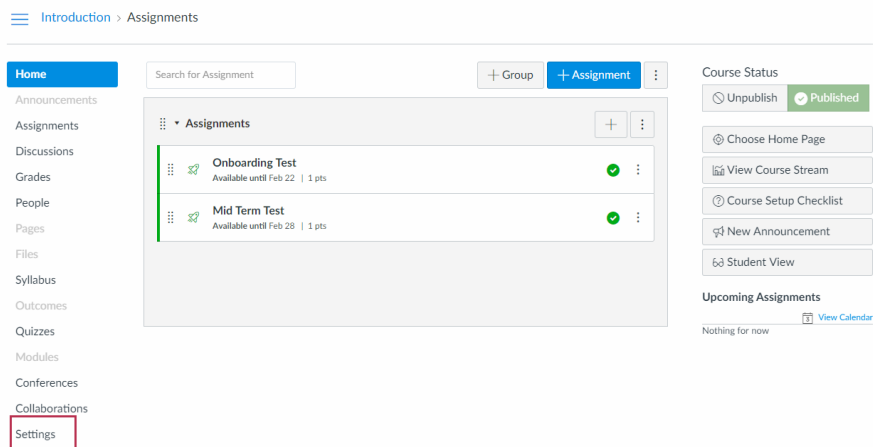
1. First, login into your canvas installation.



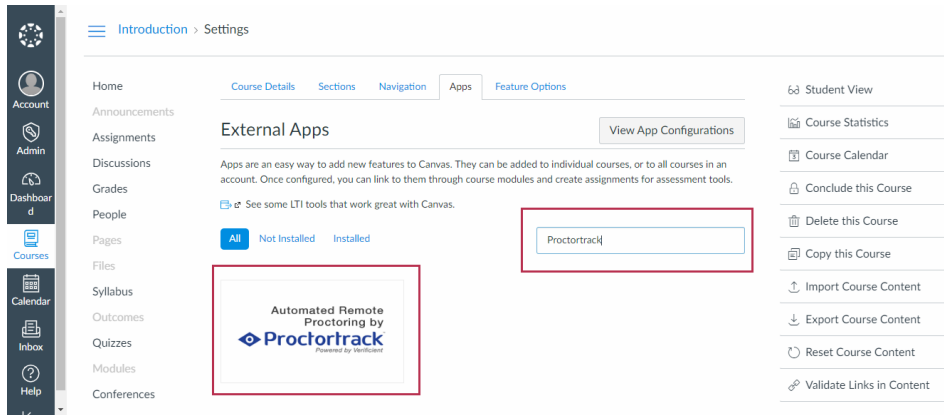
2. You will be redirected to canvas dashboard. Please select the course for which **Proctortrack** needs to be enabled.



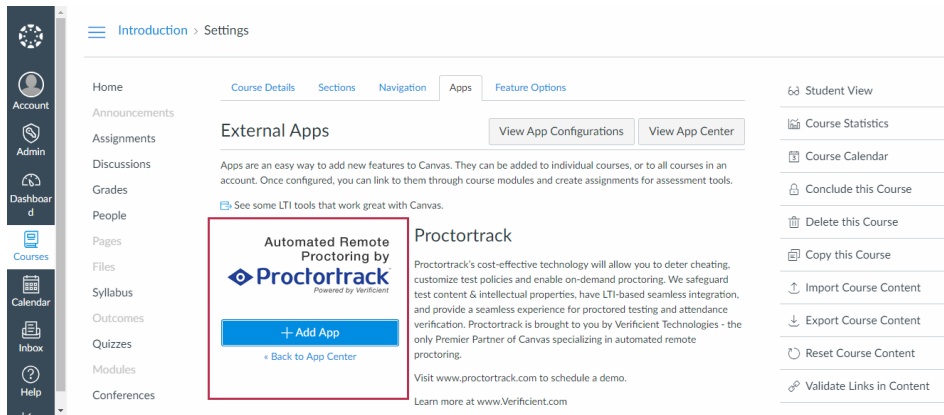
3. Once into the course, select the **setting** button (located at the bottom of left navigation)



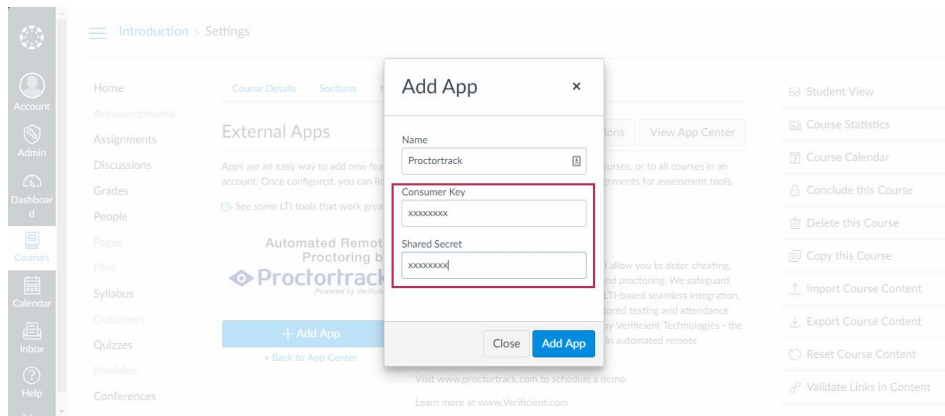
4. Select the “Apps” tab, Now please use the search box to add Proctortrack.



5. Now click on “+ Add App” button.

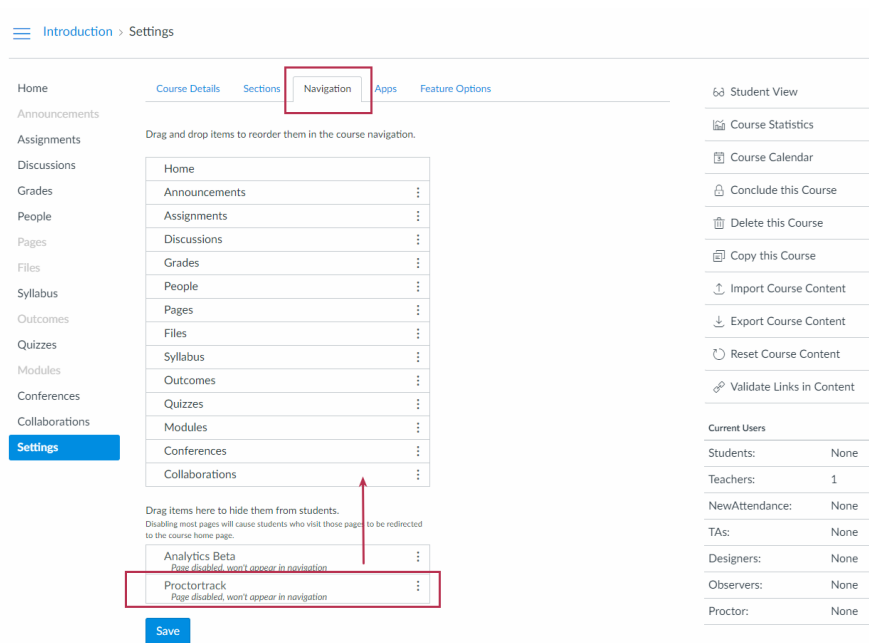


6. Add Consumer key and consumer secret in the modal window. (The credentials will be emailed separately)

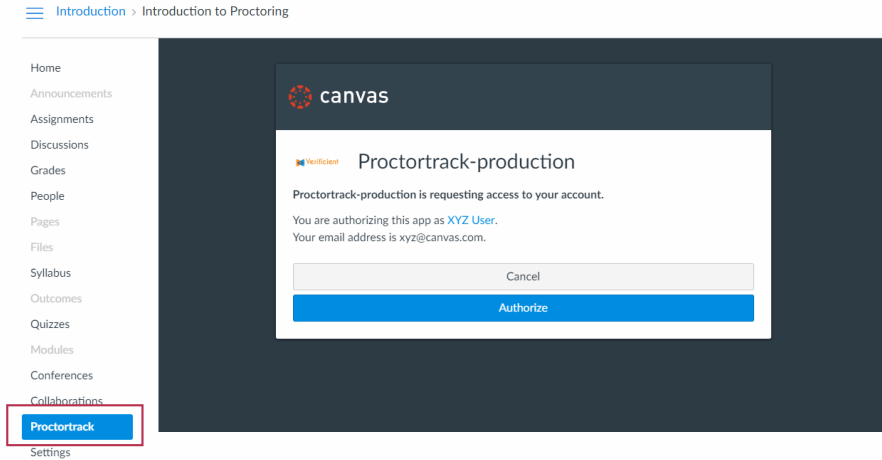


7. Once the Proctortrack app is added, it will be visible in the Navigation tab.

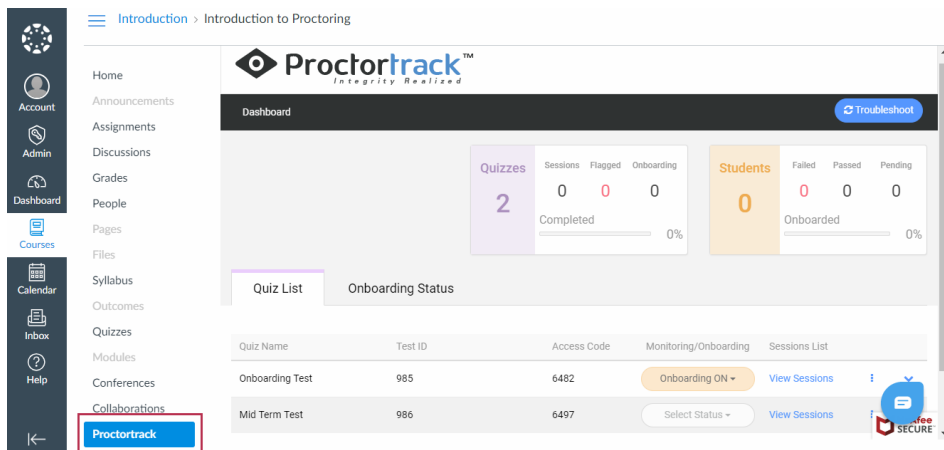
Please now move/drag the Proctortrack App in top section and click **Save**. (This will make the app available in course navigation).



- Now Proctortrack can be launched from course Navigation. Please click on “**Authorize**” and continue.



- After successful authorization, Proctortrack will launch the Instructor Dashboard.





Please refer to our Proctoring manual to know about setting up proctoring exams.

Our [support](#) works 24*7*365 days a year, if you ever feel stuck do email/call us anytime to speak with our support team.